

技术规范

1. 公称通径 DN 350/700 mm
2. 最大行程 h 152±5% mm

TECHNICAL SPECIFICATION:

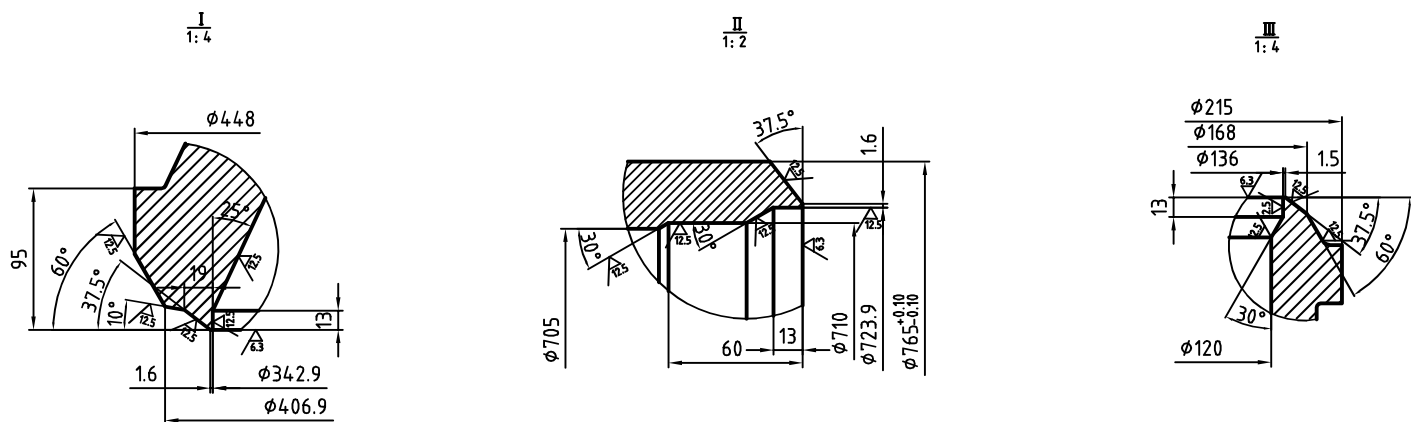
1. NOMINAL DIAMETER DN 350/700 mm
2. STROKE h 152±5% mm

技术要求

1. 强度试验压力 进口41.86 Mpa(418.6Kg/cm²) 出口7.86 Mpa(78.6Kg/cm²)
密封试验按ANSI/FCI 70-2 V级: 试验压力 13.83Mpa(138.3Kg/cm²) 最大泄漏量: 7.24毫升/分钟
介质 水
2. 阀杆螺纹及中法兰螺纹连接处涂适量Molykote1000化合物。
3. 阀门应能随管道自由膨胀, 阀体上不允许焊接固定支架或它物来承受管道拉力。
4. 图纸所有尺寸单位为mm。

TECHNICAL REQUIREMENTS

1. BODY HYDROSTATICAL TEST PRESSURE INLET 41.86 Mpa(418.6Kg/cm²)
LEAKAGE PER ANSI/FCI 70-2 V : SEAL TEST PRESSURE 13.83Mpa(138.3Kg/cm²) MAX. LEAKAGE:7.24ml/min
MEDIUM WATER
2. THE THREAD FACE OF STEM AND ALL FLANGE MUST BE COATED CHEMICAL COMPORD MOLYKOTE 1000.
3. VALVE CAN FREE MOVE FOLLOW WITH PIPE SYSTEM,NO EXTRA LOAD OR FIXED SUPPORT ARE ALLOWED WELDDING IN THE BODY.
4.ALL DIMENSIONS ARE IN mm.



3.16	103.158.315.500	垫片washer	8	X39CrMo17-1	0.005	0.04	
3.15	000.003.176.629	螺栓bolt	8	21CrMoV5.7-Zn16D	0.04	0.32	
3.14	000101007497	盘根9.5x9.5packing	1	石墨Graphite			
3.13	H20.000.003.500	节流圈throttle sleeve	1	X20CrMoV11-1		49.35	
3.12	103.221.612.500	螺栓bolt	12	X22CrMoV12-1+QT1	0.03	0.36	
3.11	103.193.793.500	垫片washer	3	X2CrNiMo17-12-2	0.01	0.03	
3.10	000.003.148.315	螺母nut	3	25CrMo4	0.04	0.12	
3.9	103.165.738.500	双头螺栓bolt	3	21CrMoV5.7-Zn16D	0.17	0.51	
3.8	103.158.315.500	垫片washer	16	X39CrMo17-1	0.084	1.344	
3.7	000.003.176.955	螺栓bolt	16	X22CrMoV12-1+QT1	0.04	0.64	
3.6	H16.000.001.500	压环retainer ring	1	X19CrMoVNbN11-1		2.36	
3.5	103.228.276.500	压盖clamp plate	1	SA182 F22 CL3		0.22	
3.4	3224.00081	填料盖gland	1	410SS		0.3786	
3.3	H11.000.003.500	阀杆装配plug ass	1			38.14	
3.2	H10.000.004.500	阀盖bonnet	1	SA182 F91		117.8	
3.1	H09.000.002.500	阀座seat	1	X20CrMoV11-1		5.88	
2	S030555	喷嘴组件nozzle	7		7	49	OP5630 L=80
1	H01.000.015.500	阀体及减温器body&dam	1			1600.9	1600.9

FOR APPROVAL

REV.	DESCRIPTION	DATE	DESIGNED BY	CHECKED BY	REVIEWED BY	APPROVED BY
OWNER		POWER GENERATION CORPORATION 1				
CONSULTANT		THERMAL POWER PROJECT MANAGEMENT BOARD 3				
CONTRACTOR		POWER ENGINEERING CONSULTING JOINT STOCK COMPANY 3				
SUBCONTRACTOR		THE CONSORTIUM OF CHENGDA-DEC-SWEPDI-ZEPC				
PROJECT :		DUYEN HAI 3 THERMAL POWER PLANT PROJECT				CONTRACT NO: DH3-05082011
DRAWING NAME: 高压旁路阀 HP BYPASS VALVE						
PROJECT CONTROL NO:		DH3-31MAN10AA001-M-PSC-0001				
DRAWING NO : HBSE 280-300						REV: 0
设计 DES.			高压旁路阀 HP BYPASS VALVE		SHANGHAI CCI POWER CONTROL EQUIPMENT CO.,LTD 项目 PRO. 第 张 共 张 SHEET OF 重量 WT. 2400 比例 SCALE 1:10 HBSE 280-300	
校对 CK						
审核 REV.						
审定 VER.						
标检 STD.CK						
工艺 TBC.						
批准 APPRO			—			
签字 SIGN.			日期 DATE			